

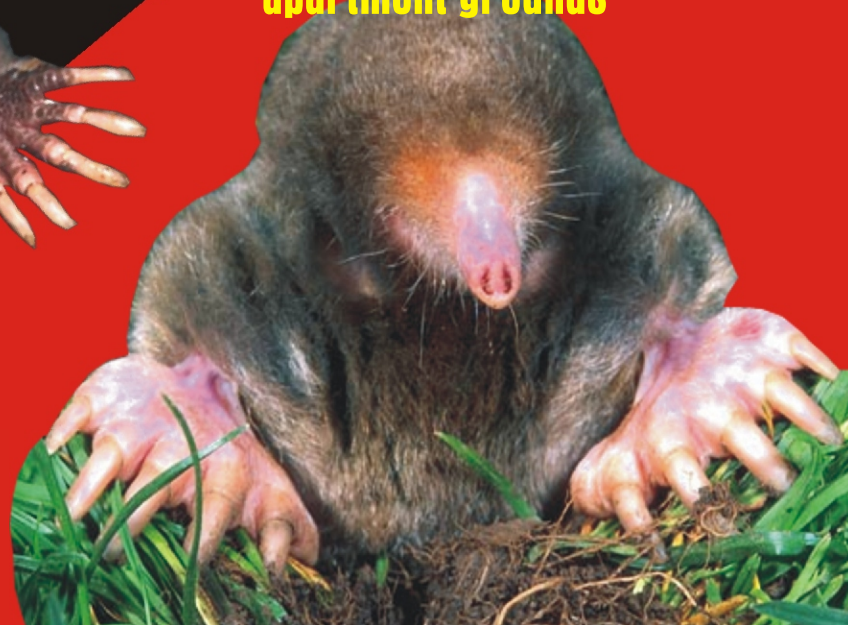
NATURAL OILS

Dr. T's  
Nature Products  
THE REPELLENT CO.®

40,000 SQ. FT.

# WHOLE CONTROL MOLE REPELLENT

For use on turf, lawns &  
apartment grounds



LASTS A MINIMUM  
OF 1 MONTH

CAUTION: Keep Out of Reach Of Children

### PRECAUTIONARY STATEMENTS:

Do not swallow. Avoid contact with eyes as product may cause eye irritation. Call a physician if irritation persists. Avoid prolonged contact with skin or clothing. Avoid contamination of food or feed. Do not apply directly to areas where surface water is present or to intertidal areas below the mean watermark of lakes, ponds or streams. Do not use or store near heat or open flame.

### STATEMENT OF PRACTICAL TREATMENT:

**IF IN EYES:** Flush with water for fifteen minutes.

**IF ON SKIN:** Wash with soap and water.

**IF INHALED:** Move to an area where fresh air is available, use oxygen if available.

**IF SWALLOWED:** Do not induce vomiting and call a physician.

Wash thoroughly with soap and water after handling. Remove contaminated clothing and wash before reuse. Do not contaminate water by cleaning of equipment or disposal of wastes.

**Where to apply:** Whole Control may be applied to lawns, turf and apartment grounds.

**Product Description:** Promotes and restores lawn and garden areas by inhibiting the formation of burrows, tunnels, ridges and holes that are caused by moles. This product is not destroyed by rain and may remain effective for a minimum of 1 month when applied as directed. According to soil type, it may take up to a week for the product to reach maximum effectiveness.

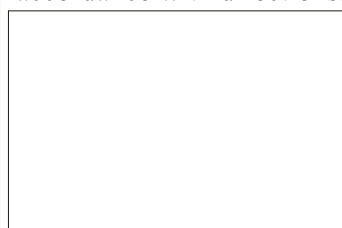
**Storage and Use Directions:** For application mix one gallon of Whole Control with 40 ounces of dish washing detergent (with a high grease cutting action) example: Joy. Add 20 gallons of water. A gallon of Whole Control when mixed will cover up to a **40,000 square-foot** area when sprayed evenly for moles. Immediately following the application, irrigate with a sprinkler or hose until the soil is saturated and water begins to stand on the surface.

**When to apply Whole Control:** Apply when the signs of digging, tunneling and burrowing first appear. For year round control, apply Spring, Summer and Fall.

**Storage:** Store only in original container in a cool, dry place inaccessible to children and pets.

**Disposal:** Do not reuse empty container. Rinse thoroughly. Securely wrap in newspaper and discard in trash.

**Notice:** the buyer assumes all responsibilities for safety and use not in accordance with directions.



DR. T'S NATURE PRODUCTS, INC.

P. O. Box 682  
PELHAM, GA 31779  
800-299-6288  
WWW.REPELL.COM



Active Ingredients:  
Castor Oil U.S.P.: 100%  
Inert:.....0%  
Total:.....100%  
Net weight: 1 gal. (3.785 L)