

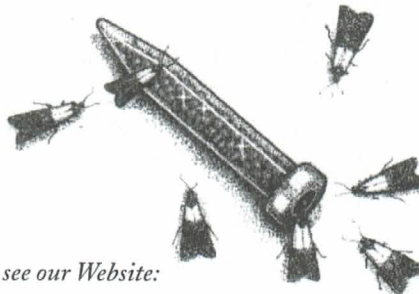
Bullet Lure Instructions

Warning: DO NOT Puncture or Take Cap Off of Bullet Lure!

The enclosed pheromone Bullet Lures have a semi-permeable fabric matrix in the aluminum cap attached to the plastic lure. The matrix allows the delayed release of the pheromone over an extended period of time. **DO NOT** puncture the lure or the cap. They become active as soon as they are removed from the package.

Once the Bullet Lure is removed from its package, place it onto the glue towards the center of the trap. Take care not to cover the cap with glue.

Insects Limited, Inc.
16950 Westfield Park Road
Westfield, Indiana 46074-9374 USA
Call (1) 800-992-1991
Tel (1) 317-896-9300
Fax (1) 317-867-5757



For additional Technical Support see our Website:

www.insectslimited.com