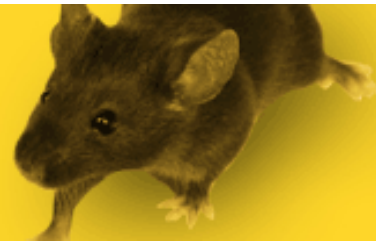


The Victor logo is displayed in a bold, red, sans-serif font. The letter 'V' is significantly larger than the other letters and features a small mouse silhouette integrated into its upper left curve.

## **Victor® Snap Rat Trap**

### **Instructions**

Note: Remove Staple Holding Locking Bar To Wood Base.

#### **To Set & Place the Rat Traps:**

1. Place Bait in Bait Pedal.
2. Pull Back Bow and Hold Down With Thumb.
3. Engage Locking Bar On Curved Portion of Bait Pedal.
4. Place Trap(s) With Bait Pedal Facing Wall.